



Manufacturers and Inventors of the Adjustable Ruler



Making the most of the Westalee Design products
Mystery Sampler Quilt

[Westalee Range](#)

[Instructions and Videos](#)

[Contact Us](#)

Block 90

PEACHY

6" x 6" Finished Block

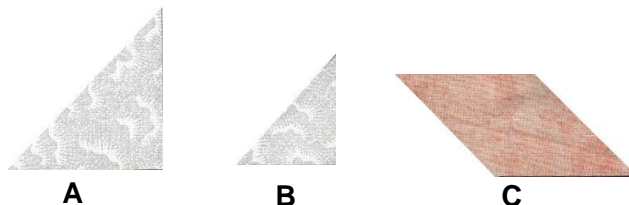
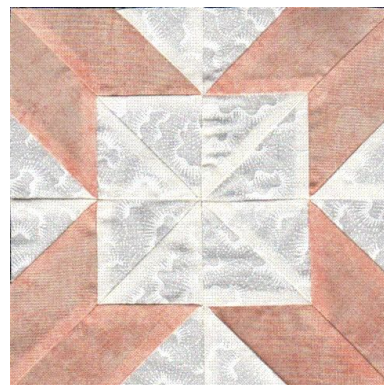
Westalee Tools used:

Adjustable Ruler 12 1/2" or 18" or 24"

Miniature Adjustable Quarter Square Triangle

Miniature Adjustable Half Square Triangle

This block is made without "Y" seams



CUT

A cut 8 - Half Square Triangles from Background Fabric. Set Half Square Triangle to 1 3/4"

B cut 8 - Quarter Square Triangles from Background Fabric. Set Quarter Square Triangle to 1 3/4"

NOTE: The Quarter Square Triangle is used here as the measurement of this piece, is not a Half Square Measurement. (You do need, in this case only, to ignore the bias markings on the Quarter Square Triangle tool. Remember to cut piece **B on the Bias**, as you would for a Half Square Triangle. This puts the bias on the inside of the block.

C cut 8 - 45 degree Diamonds from Focus Fabric with Ruler set at 1 3/4"

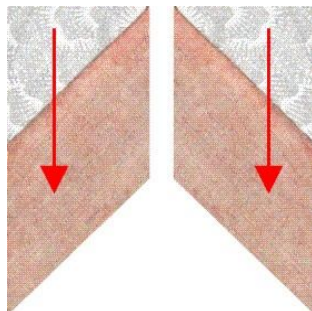
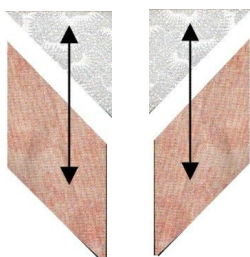
Follow the diagrams to piece units and block

The Black arrows show construction

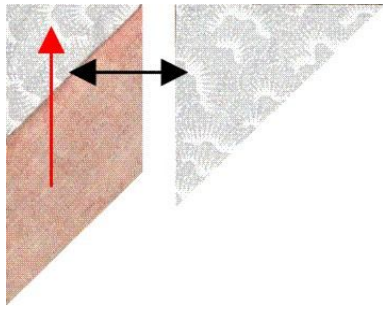
Press the seams in the direction of the Red arrows



Sew using a scant Quarter Inch Seam Allowance

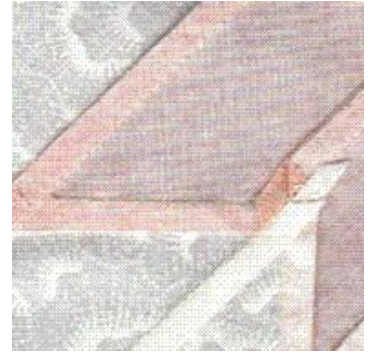
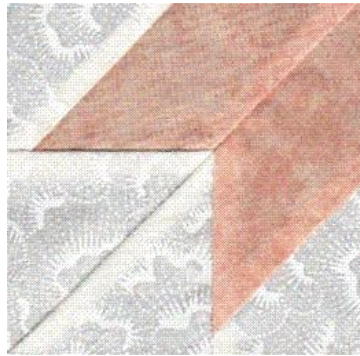
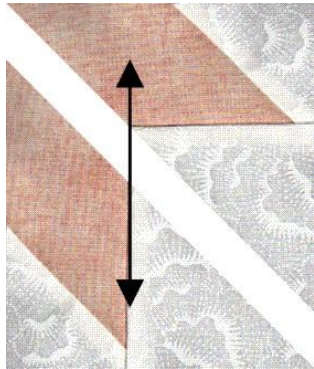
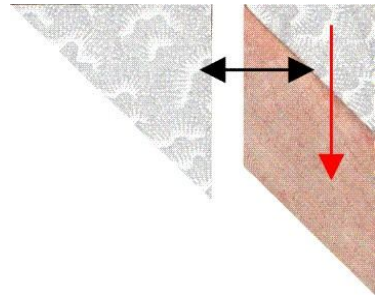


Sew B to C to make unit 1
Make 4 and
Make 4 reverse

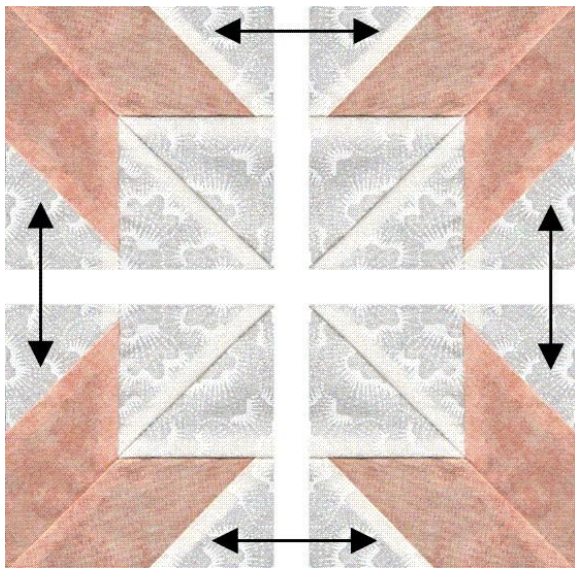


Now join Unit 1 to A to a
pieced half square triangle

Make 4 and 4 reverse



Join as shown



Join to complete block press as shown

Please note: All blocks have been made using the instructions given. No responsibility can be provided nor results guaranteed. having no control over the choices of materials or procedures used, neither the author or the publisher shall have any liability to any person or entity with respect to any loss or damage caused directly or indirectly by the information given.

© Copyright 2010, Westalee Design. All rights reserved