



Manufacturers and Inventors of the Adjustable Ruler



Making the most of the Westalee Design products
Mystery Sampler Quilt

Westalee Range

Instructions and Videos

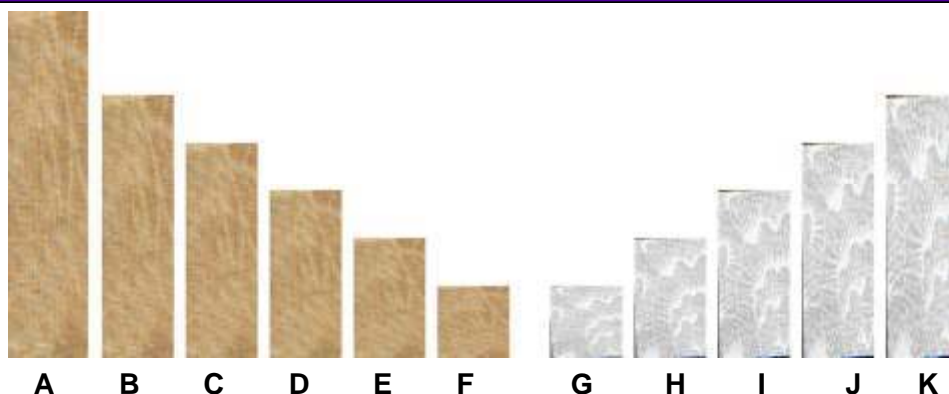
Contact Us

Block89

Westalee Tools used:

Adjustable Ruler 12 1/2" or 18" or 24"

STACKS 6" x 6" Finished Block



CUT

- A** cut 1 - 1 1/2" x 6 1/2" Rectangle Focus Fabric
- B** cut 1 - 1 1/2" x 5 1/2" Rectangle FocusFabric
- C** cut 1 - 1 1/2" x 4 1/2" Rectangle FocusFabric
- D** cut 1 - 1 1/2" x 3 1/2" Rectangle FocusFabric
- E** cut 1 - 1 1/2" x 2 1/2" Rectangle Focus Fabric
- F** cut 1 - 1 1/2" x 1 1/2" Square Focus Fabric

- G** cut 1 - 1 1/2" x 1 1/2" Square Background Fabric
- H** cut 1 - 1 1/2" x 2 1/2" Rectangle Background Fabric
- I** cut 1 - 1 1/2" x 3 1/2" Rectangle Background Fabric
- J** cut 1 - 1 1/2" x 4 1/2" Rectangle Background Fabric
- K** cut 1 - 1 1/2" x 5 1/2" Rectangle BackgroundFabric

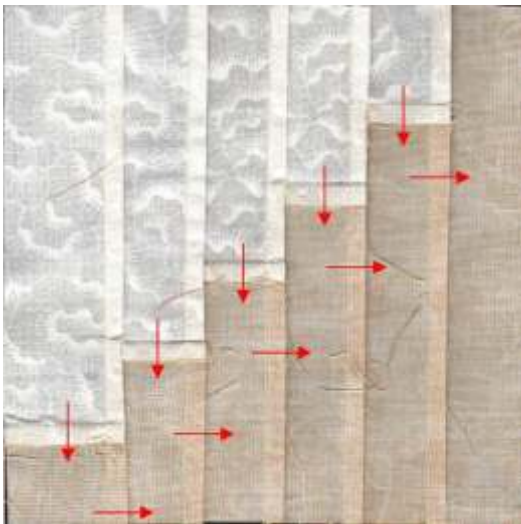
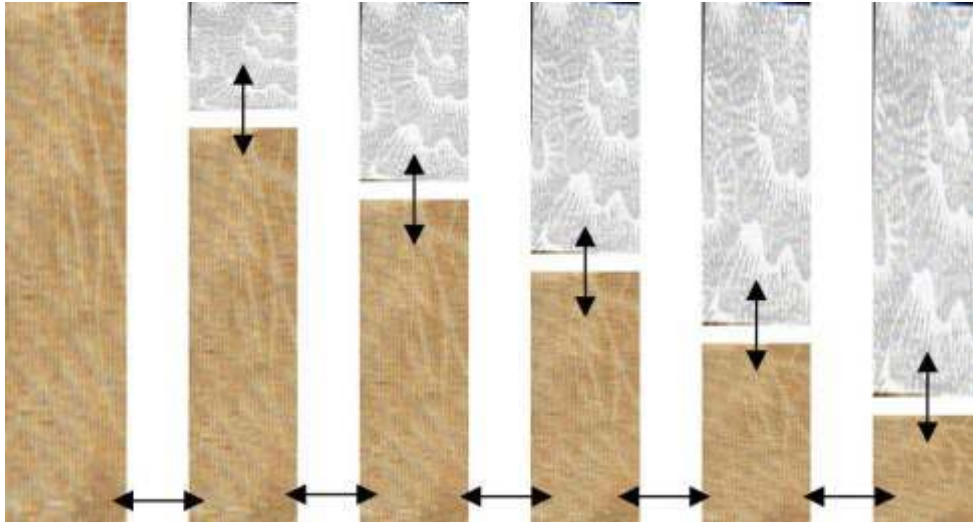
Follow the diagrams to piece units and block

The Black arrows show construction

Press the seams in the direction of the Red arrows



Sew using a scant Quarter Inch Seam Allowance



Press seams as shown

TIP:

Double check your scant quarter setting by sewing two 2 1/2" squares together. They should measure 4 1/2" when pressed open

Please note: All blocks have been made using the instructions given. No responsibility can be provided nor results guaranteed. having no control over the choices of materials or procedures used, neither the author or the publisher shall have any liability to any person or entity with respect to any loss or damage caused directly or indirectly by the information given.

© Copyright 2010, Westalee Design. All rights reserved