



Manufacturers and Inventors of the
Adjustable Ruler



Making the most of the Westalee Design products
Mystery Sampler Quilt

Westalee Range

Instructions and Videos

Contact Us

Block 72

NINE PATCH ALBUM

6" x 6" Finished Block

Westalee Tools used:

Adjustable Ruler 12 1/2" or 18" or 24"



A



B



C



D

CUT

A cut 4 - 2 1/2" x 2 1/2" Squares Focus Fabric

B cut 2 - 2 1/2" x 2 1/2" Squares Background Fabric

For the center unit, I have provided two methods of cutting.

This one will give a narrower center piece but uses the marked lines on the ruler:

C cut 2 - 1 1/4" x 2 1/2" Rectangles Focus Fabric 1

D cut 1 - 1" x 2 1/2" Rectangle Background Fabric

This is the method I used.

I set the guide on the ruler between the 1 1/8" mark and the 1 1/4" mark and cut 2 pieces for **C** and one piece for **D** (1 3/16" x 2 1/2")

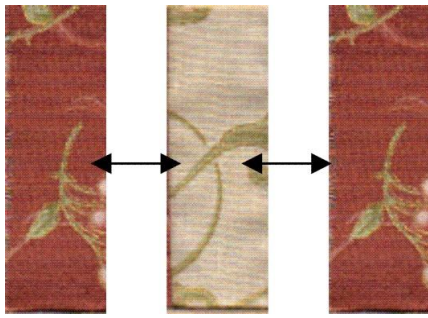
Follow the diagrams to piece units and block

The Black arrows show construction

Press the seams in the direction of the Red arrows

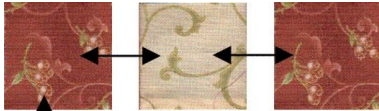
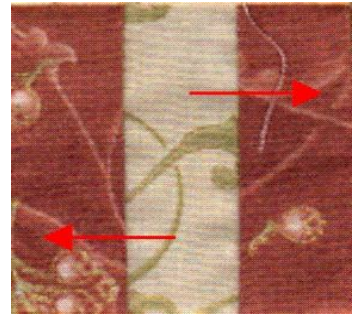


Sew using a scant Quarter Inch Seam Allowance

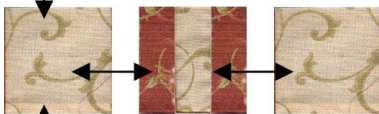


Center unit

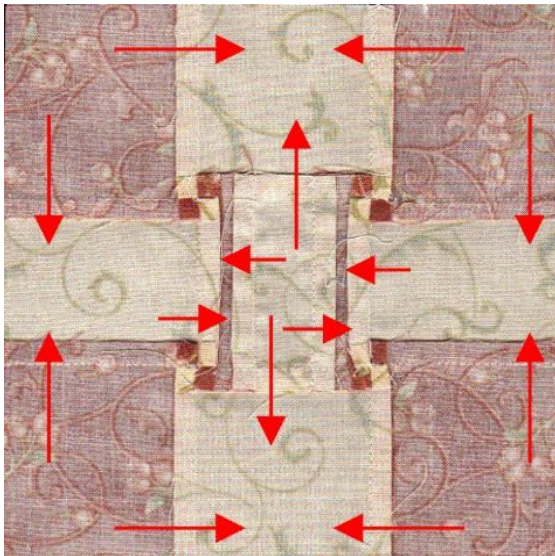
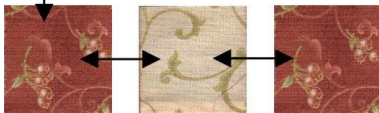
Make 1



Assemble the pieces in rows



Join the rows



Press as shown

Please note: All blocks have been made using the instructions given. No responsibility can be provided nor results guaranteed. having no control over the choices of materials or procedures used, neither the author or the publisher shall have any liability to any person or entity with respect to any loss or damage caused directly or indirectly by the information given.

© Copyright 2010, Westalee Design. All rights reserved