



Manufacturers and Inventors of the Adjustable Ruler



Making the most of the Westalee Design products  
**Mystery Sampler Quilt**

[Westalee Range](#)

[Instructions and Videos](#)

[Contact Us](#)



## Block 55

### AUNT ADDIES

6" x 6" Finished Block

#### Westalee Tools used:

Adjustable Ruler 12 1/2" or 18" or 24"

Adjustable Miniature Quarter Square Triangle



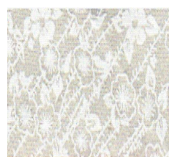
A



B



C



D



E

**CUT** (Measurements are actual tools settings and include seam allowances)

**A** cut 8 - 1 1/2" Quarter Square Triangles Focus fabric 1

**B** cut 8 - 1 1/2" Quarter Square Triangles Focus fabric 2

**C** cut 4 - 3" Quarter Square Triangles of Background Fabric

**D** cut 1 - 3 1/2" x 3 1/2" Square of Background Fabric

**E** cut 4 - 2" x 2" Squares of Background Fabric

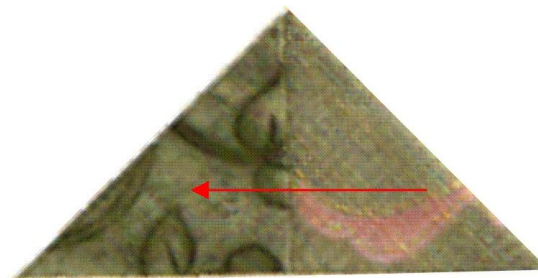
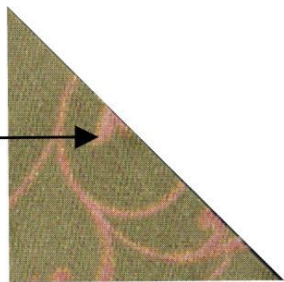
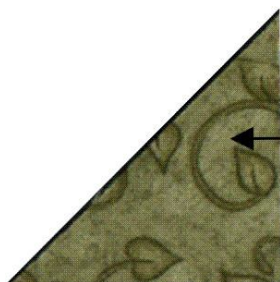
Follow the diagrams to piece units and block

The Black arrows show construction

Press the seams in the direction of the Red arrows



**Sew using a scant Quarter Inch Seam Allowance**



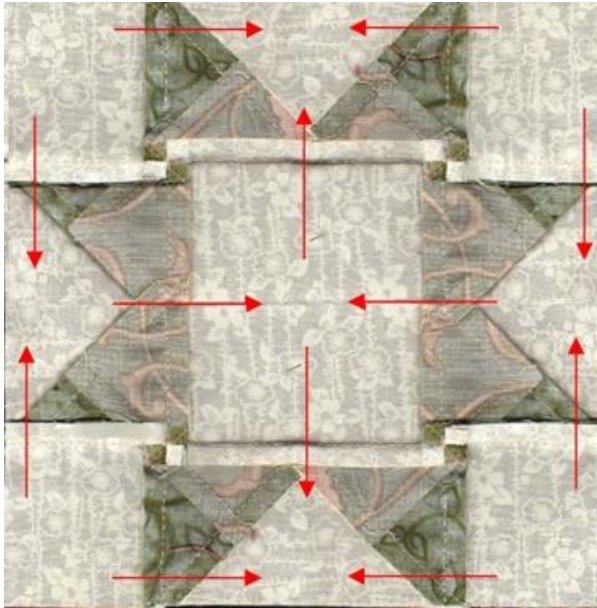
Using A and B (Quarter Square Triangles) make **4** Half Square Triangles and **4 reverse** Half Square Triangle

## Press to the Dark



Using your newly created half square triangles and piece **C**, make a pieced Flying Geese unit.

Make four.



Complete the block by sewing **E** to each end of the Flying Geese unit, top row.

Repeat for the bottom row.

Sew the center row using piece **D** and the 2 remaining flying geese.

Join the rows as shown. Press seams and spiral the centers.

Please note: All blocks have been made using the instructions given. No responsibility can be provided nor results guaranteed. Having no control over the choices of materials or procedures used, neither the author or the publisher shall have any liability to any person or entity with respect to any loss or damage caused directly or indirectly by the information given.

© Copyright 2010, Westalee Design. All rights reserved