



Manufacturers and Inventors of the Adjustable Ruler



Making the most of the Westalee Design products
Mystery Sampler Quilt

[Westalee Range](#)

[Instructions and Videos](#)

[Contact Us](#)

Block 5

WILD GOOSE CHASE 6" x 6" Finished Block

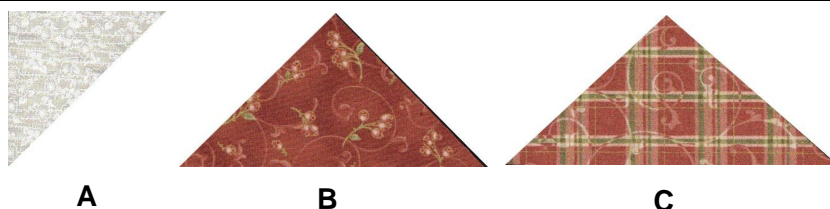
Westalee Tools used:

- Adjustable Ruler 12 1/2" or 18" or 24"
- Half Square Triangle
- Quarter Square Triangle



There is extra information available for making different sized flying geese on our Web site at www.westalee.com.au/vid_instructions.php

The Flying Goose is used many traditional pieced blocks, it is an important unit to know how to make. The Westalee Tools make this unit a breeze to make, after 37 years of piecing this is the easiest method I have used to make flying geese units.



CUT

- | | | |
|---------------------|---|-----------------------------------|
| A cut 4 - 3" | Half Square triangles background fabric | Set Half Square Triangle at 3" |
| B cut 1 - 6" | Quarter Square Triangle Focus fabric | Set Quarter Square Triangle at 6" |
| C cut 1 - 6" | Quarter Square Triangle Focus fabric | Set Quarter Square Triangle at 6" |

Follow the diagrams to piece units and block

The Black arrows show construction

Press the seams in the direction of the Red arrows



Sew using a scant Quarter Inch Seam Allowance



Place piece A on B

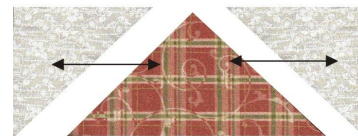
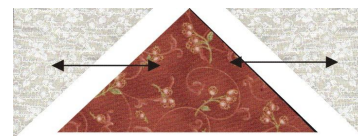


Align the bottoms of each piece and stitch (seam line shown)



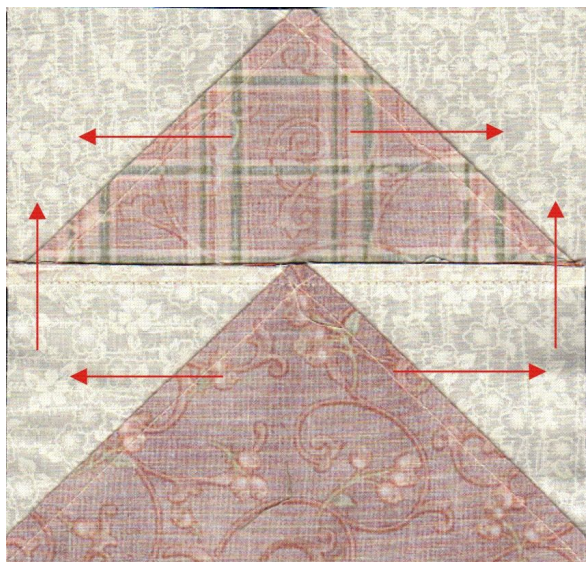
Press seam allowance to Background Fabric

Repeat process on other side
Make 2 units



Trim away dog ears

Join the units

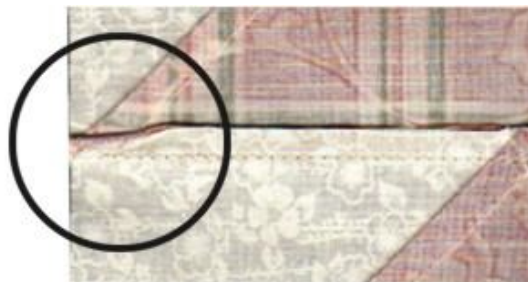


Press seam in direction of arrows

TIP:

When pressing make sure that your seams are pressed without folds

Avoid
this



Please note: All blocks have been made using the instructions given. No responsibility can be provided nor results guaranteed. having no control over the choices of materials or procedures used, neither the author or the publisher shall have any liability to any person or entity with respect to any loss or damage caused directly or indirectly by the information given.