



Manufacturers and Inventors of the  
Adjustable Ruler



Making the most of the Westalee Design products  
**Mystery Sampler Quilt**

Westalee Range

Instructions and Videos

Contact Us

## Block 15

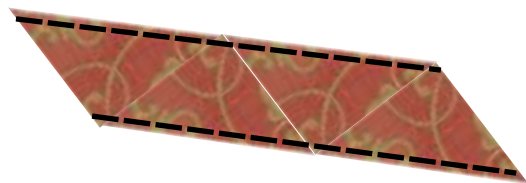
### Westalee Tools used:

Adjustable Ruler 12 1/2" or 18" or 24"

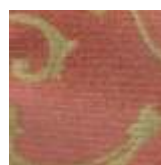
Adjustable Half Square Triangle

### FRIENDSHIP STAR

6" x 6" Finished Block



B



C



D

- A** Use your Half Square Triangle adjusted to 2" to set your Adjustable Ruler.  
Place your Focus fabric **A** and Background Fabric **B**, right sides facing.  
From your fabric cut out enough strips on the bias to make 4 Half Square Triangles.  
Sew the strip down both sides to create a tube (Scant Quarter)  
**C** Cut 1 – 2 1/2" Square, Focus Fabric  
**D** Cut 4 – 2 1/2" Squares, Background Fabric

Follow the diagrams to piece units and block

The Black arrows show construction

Press the seams in the direction of the Red arrows

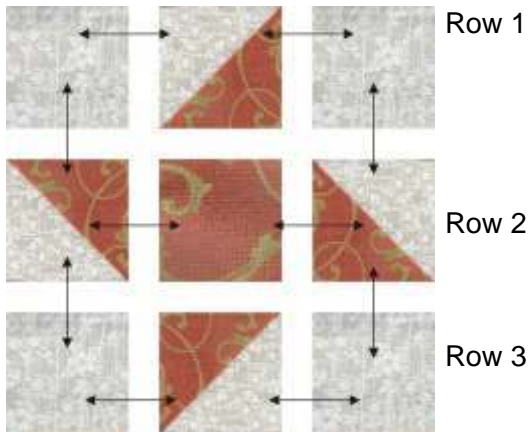


### Sew using a scant Quarter Inch Seam Allowance



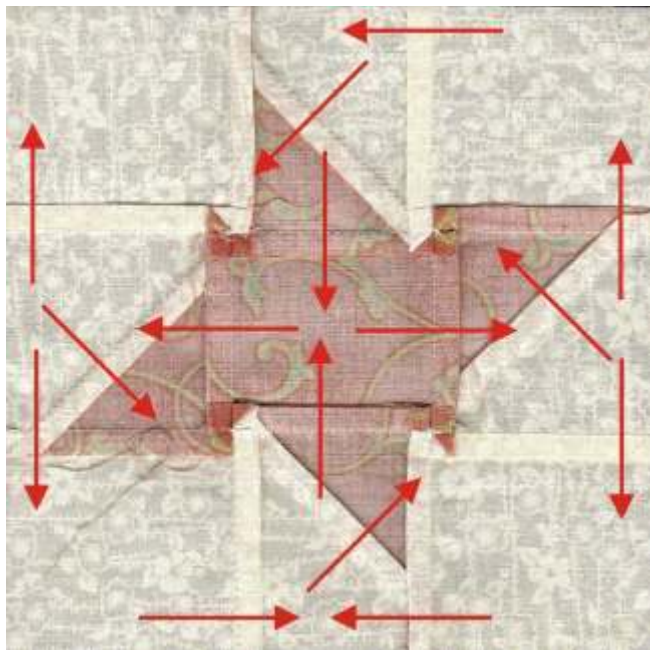
Press the 4 Half Square Triangle units open

*The unit will measure 2 1/2" square*



Sew each row

Sew the rows



Press seams as shown

Spiral the seams around the centre unit

Please note: All blocks have been made using the instructions given. No responsibility can be provided nor results guaranteed. having no control over the choices of materials or procedures used, neither the author or the publisher shall have any liability to any person or entity with respect to any loss or damage caused directly or indirectly by the information given.

© Copyright 2010, Westalee Design. All rights reserved